

Product summary

Travelstar 40GNX

2.5 inch ATA/IDE hard disk drive

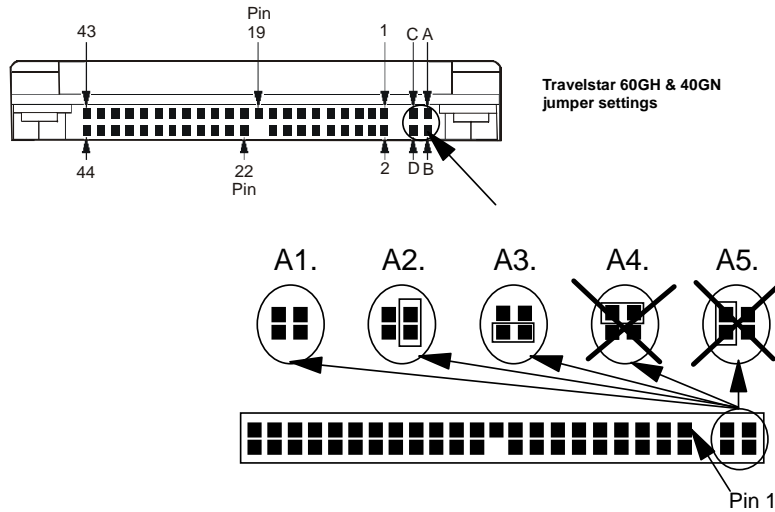


Enhanced Availability models

Models: IC25N040ATCX05
IC25N020ATCX05

Features	Benefits
<ul style="list-style-type: none">▪ Capacities: 20 and 40 GB at 512 bytes/sector▪ Height: 9.5 mm	<ul style="list-style-type: none">▪ High capacities in a slim 2.5 inch form factor
<ul style="list-style-type: none">▪ Interface transfer rates: up to 100 MB/s	<ul style="list-style-type: none">▪ Popular interface with excellent performance
<ul style="list-style-type: none">▪ Nonoperational shock: 800 G/1 ms▪ Operational shock: 200 G/2 ms	<ul style="list-style-type: none">▪ Robust design for portable computing applications
<ul style="list-style-type: none">▪ Media data transfer rate: 297 Mb/s max▪ Rotational speed: 5400 RPM	<ul style="list-style-type: none">▪ High rate of data transfer across disk surface
<ul style="list-style-type: none">▪ Average seek time: 12 ms (read)▪ Average latency: 5.5 ms	<ul style="list-style-type: none">▪ Fast access to stored data
<ul style="list-style-type: none">▪ Segmented buffer with 8 MB write cache (upper 300 KB used for firmware)▪ Enhanced ECC On-The-Fly	<ul style="list-style-type: none">▪ Fast access to data and improved throughput▪ High reliability
<ul style="list-style-type: none">▪ Giant Magnetoresistive heads	<ul style="list-style-type: none">▪ Able to read high areal density data
<ul style="list-style-type: none">▪ No-ID sector formatting▪ PRML data channel▪ Multizone recording	<ul style="list-style-type: none">▪ More data stored per track, increased sustained data transfer rate
<ul style="list-style-type: none">▪ Fluid Dynamic Bearing motor technology	<ul style="list-style-type: none">▪ Quiet drive operation
<ul style="list-style-type: none">▪ Load/Unload heads	<ul style="list-style-type: none">▪ Increased durability during power save modes and non-operation
<ul style="list-style-type: none">▪ S.M.A.R.T. function▪ Drive Fitness Test (DFT) technology	<ul style="list-style-type: none">▪ Protection of user data
<ul style="list-style-type: none">▪ Glass substrate disks	<ul style="list-style-type: none">▪ Improved data integrity▪ Longer disk lifetime

Electrical connector locations



Drive Address

The position of jumpers on the interface connector determines the address of the drive. In the illustration the jumper pins on the interface connector are labeled A, B, C, and D.

- ◆ A master drive requires no jumper.
- ◆ A slave drive requires a jumper on pins A & B (A2).
- ◆ Cable Select requires a jumper on pins D & B (A3).
- ◆ All other settings are reserved.

Cabling

Maximum cable length from host system to the drive is 18 inches.

AT Signal Connector

The signal connector for AT attachment mates with the 50-pin plug specified in the ATA/ ATAPI-5 T13/1321D specification, Rev. 3.

DC power requirements

Nominal supply	+5 Volt dc	Supply rise time	7–100 ms
Power supply ripple (0-20 MHz)	100 mV p-p max. ¹	Supply voltage	–0.3 to + 6.0 V
Tolerance	±5% ²		

Power specifications	W (RMS typical)
Performance Idle average ³	2.00
Read average ⁴	2.5
Write average	2.5
Seek average ⁵	2.6
Standby	0.25
Sleep	0.1
Startup (maximum peak) ⁶	5.0
Average from power on to ready	3.8

Notes:

1. The maximum fixed disk ripple is measured at the 5 V dc input of the drive
2. The drive does not incur damage for an over voltage condition of +25% (max. duration of 20 ms) on the 5-Volt nominal supply
3. The idle current is specified at an inner track
4. The read/write current is specified based on three operations of 63 sector read/write per 100 ms
5. The seek average current is specified based on three operations per 100 ms
6. The worst case operating current includes motor surge

Data organization

Data organization	40-GB model	20-GB model
Number of heads	4	2
Sectors/track	336-633	330-633
Number of cylinders	16,383	16,383
Total cust. usable data sectors	78,140,160	39,070,080
Total cust. usable data bytes	40,007,761,920	20,003,880,960

Command descriptions

The following commands are supported by the drive:

Commands	(Hex)	P	Commands	(Hex)	P	Commands	(Hex)	P
Check Power Mode	E5	3	Read Native Max ADDRESS	F8	3	S.M.A.R.T. Enable/Disable Attribute Autosave	B0	3
Check Power Mode*	98	3	Read Sectors	20	1	S.M.A.R.T. Enable/Disable Automatic Off-line	B0	3
Device Configuration Restore	B1	3	Read Sectors	21	1	S.M.A.R.T. Enable Operations	B0	3
Device Configuration Freeze Lock	B1	3	Read Verify Sectors	40	3	S.M.A.R.T. Execute Off-line Immediate	B0	3
Device Configuration Identify	B1	1	Read Verify Sectors	41	3	S.M.A.R.T. Read Attribute Values	B0	1
Device Configuration Set	B1	2	Recalibrate	1x	3	S.M.A.R.T. Read Attribute Thresholds	B0	1
Enable/Disable Delayed Write	FA	3	Security Disable Password	F6	2	S.M.A.R.T. Read Log Sector	B0	1
Execute Device Diagnostic	90	3	Security Erase Prepare	F3	3	S.M.A.R.T. Return Status	B0	3
Flush Cache	E7	3	Security Erase Unit	F4	2	S.M.A.R.T. Save Attribute Values	B0	3
Format Track	50	2	Security Freeze Lock	F5	3	S.M.A.R.T. Write Log Sector	B0	2
Format Unit	F7	3	Security Set Password	F1	2	Standby	E2	3
Identify Device	EC	1	Security Unlock	F2	2	Standby*	96	3
Idle	E3	3	Seek	7x	3	Standby Immediate	E0	3
Idle*	97	3	Sense Condition	F0	3	Standby Immediate*	94	3
Idle Immediate	E1	3	Set Features	EF	3	Write Buffer	E8	2
Idle Immediate*	95	3	Set Max ADDRESS	F9	3	Write DMA	CA	4
Initialize Device Parameters	91	3	Set Max FREEZE LOCK	F9	3	Write DMA	CB	4
Read Buffer	E4	1	Set Max LOCK	F9	3	Write Long	32	2
Read DMA	C8	4	Set Max SET PASSWORD	F9	2	Write Long	33	2
Read DMA	C9	4	Set Max UNLOCK	F9	2	Write Multiple	C5	2
NOP	0	3	Set Multiple Mode	C6	3	Write Sectors	30	2
Read Long	022	1	Sleep	E6	3	Write Sectors	31	2
Read Long	23	1	Sleep*	99	3	Write Verify	3C	2
Read Multiple	C4	1	S.M.A.R.T. Disable Operations	B0	3			

Protocol

- 1 : PIO data IN command
- 2 : PIO data OUT command
- 3 : Non data command
- 4 : DMA command

Note: Commands marked * are alternate command codes for previously defined commands



ATTENTION: The drive must be protected against electrostatic discharge (ESD) especially when being handled. The safest way to avoid damage is to put the drive in an anti-static bag before ESD wrist straps are removed.

Drives must be shipped only in approved containers. Severe damage can be caused to the drive if the packaging does not adequately protect against the shock levels induced when a box is dropped. Consult your IBM representative if you do not have an approved shipping container.

Signal definitions

PIN	SIGNAL	I/O
01	RESET-	I
02	GND	
03	DD07	I/O
04	DD08	I/O
05	DD06	I/O
06	DD09	I/O
07	DD05	I/O
08	DD10	I/O
09	DD04	I/O
10	DD11	I/O
11	DD03	I/O
12	DD12	I/O
13	DD02	I/O
14	DD13	I/O
15	DD01	I/O
16	DD14	I/O
17	DD00	I/O
18	DD15	I/O
19	GND	
(20)	Key	
21	DMARQ	O
22	GND	
23	DIOW(*)-	I
24	GND	
25	DIOR(*)-	I
26	GND	
27	IORDY(*)	O
28	CSEL	I
29	DMACK-	I
30	GND	
31	INTRQ	O
32	IOCS16(*)-	O
33	DA01	I
34	PDIAG-	I/O
35	DA00	I
36	DA02	I
37	CS0-	I
38	CS1-	I
39	DASP-	I/O
40	GND	
41	+5V logic	power
42	+5V motor	power
43	GND	
44	(reserved)	

Notes

1. O = an output from the drive.
2. I = an input to the drive.
3. I/O = an input/output common.
4. OD = an Open-Drain output.

5. The signal lines marked with (*) are redefined during the Ultra DMA protocol to provide special functions. These lines change from the conventional to special definitions at the moment the host decides to allow a DMA burst, if the Ultra DMA transfer mode was previously chosen via SetFeatures. The drive becomes aware of this change upon assertion of the DMACK – line. These lines revert back to their original definitions upon the deassertion of DMACK at the termination of the DMA burst.

6. Power = a power supply to the drive.
7. Reserved = reserved pins which must be left unconnected.

	Special definition (for Ultra DMA)	Conventional definition
Write operation	DDMARDY-	IORDY
	HSTROBE	DIOR-
	STOP	DIOW-
Read operation	HDMARDY-	DIOR-
	DSTROBE	IORDY
	STOP	DIOW -

5 V power

There are two input pins for the +5 V power supply: the “+5 V Logic” pin and the “+5 V dc Motor” pin. These two input pins are tied together within the drive.

Electromagnetic compatibility

The drive, when installed in a suitable enclosure and exercised with a random accessing routine at maximum data rate, shall meet the following worldwide electromagnetic compatibility (EMC) requirements:

- United States FCC (Federal Communications Commission) Rules and Regulations (Class B), Part 15.
- RFI Suppression German National Requirements.
- RFI Japan VCCI Requirements of IBM products.

- EU EMC Directive Technical Requirements and Conformity Assessment Procedures.

Operating environment

The drive operates within its performance limits when the following environment is maintained. Product life calculations are based on the nominal environment for a typical application.

Relative humidity (noncondensing)

Operating	8 to 90%
Nonoperating	5 to 95%

Wet bulb temperature (noncondensing)

Operating	29.4°C
Nonoperating	40°C

Altitude

Operating	-300 to 3,048 m (10,000 ft)
Nonoperating	-300 to 12,192 m (40,000 ft)

Temperature

Operating	5 to 40°C
Nonoperating	-40 to 65°C
Max. gradient	20°C/hour

Note: The system is responsible for providing sufficient air movement to maintain surface temperatures below 50°C at the center of top cover and below 53°C at the center of the drive circuit board assembly.

Operating shock

The drive withstands the following half sine wave shock pulses with no data loss or permanent damage:

- 200 G for a duration of 2 ms
- 15 G for a duration of 11 ms

The shock test consists of ten shock inputs in each axis and direction for a total of 60; there is a minimum 3 seconds delay between shock pulses. Soft errors and automatic retries are allowed during the test.

The input level is applied to the normal disk drive subsystem mounting points used to secure the drive in a normal system.

Nonoperating shock

The drive withstands the following half sine wave shock pulses with no data loss or permanent damage:

- 800 G for a duration of 1 ms
- 120 G for a duration of 11 ms

All shocks are applied in each direction of the three mutually perpendicular drive axes, one axis at a time. Input levels shall be measured at the base plate where the drive is attached with four screws.

Operating vibration

Random vibration

The drive withstands the following vibration levels without a hard error. The test consists of 30 minutes of random vibration using the power spectral density (PSD) levels specified in the following table, applied in each of the three mutually perpendicular axes at the normal drive mounting points.

Hz	PSD (G ² /Hz)
5	2.0 x 10 ⁻⁵
17	1.1 x 10 ⁻³
45	1.1 x 10 ⁻³
48	8.0 x 10 ⁻³
62	8.0 x 10 ⁻³
65	1.0 x 10 ⁻³
150	1.0 x 10 ⁻³
200	5.0 x 10 ⁻⁴
500	5.0 x 10 ⁻⁴

Note: Overall RMS level of vibration is 0.67G.

Swept Sine Vibration Limits

The drive will operate without a hard error while being subjected to the following swept sine vibration level (applied and measured at the normal drive mounting points):

- 1G zero-to-peak from 5 to 500 Hz with a sweep rate of 2.0 Octaves/minute.

Nonoperating vibration

Random vibration

The drive withstands the following vibration levels without loss or permanent damage. The test consists of 30 minutes of random vibration applied in each of the three mutually perpendicular axes at the normal

drive mounting points. The PSD levels for this test simulating the shipping and relocation environment are shown below.

Hz	G ² /Hz
2.5	0.001
5	0.03
40	0.18
500	0.18

Note: Overall RMS level of vibration is 3.01G rms.

Swept Sine Vibration Limits

No permanent damage will occur when the drive is subjected to the following swept sine vibration level (applied and measured at the normal drive mounting points) with no power applied to the drive (heads in the unload position):

- 5G zero-to-peak from 10 to 500 Hz with a sweep rate of 0.5 Octaves/minute, 25.4 mm double amplitude displacement from 5 to 10 Hz.

Acoustics

The criteria of A-weighted sound power level are described below.

Measurements are to be taken in accordance with ISO 7779. The mean of the sample of 40 drives is to be less than the typical value. Each drive is to be less than the maximum value. The drives are to meet this requirement in both board down orientations.

A-weighted Sound Power	Typical (Bel)	Max (Bel)
Idle	2.5	2.7
Operating	3.1	3.3

The background power levels of the acoustic test chamber for each octave band are to be recorded.

Sound power tests are to be conducted with the drive supported by spacers so that the lower surface of the drive is located 25±3 mm above the chamber floor. No sound absorbing material shall be used.

S.M.A.R.T. function

The intent of Self-Monitoring, Analysis, and Reporting Technology (S.M.A.R.T.) is to protect user data and prevent unscheduled system downtime that may be caused by predictable degradation or fault of the device. By monitoring and storing critical performance and calibration parameters, S.M.A.R.T. devices employ sophisticated data analysis algorithms to predict the likelihood of near-term degradation or a fault condition. By alerting the host system of a negative reliability status condition, the host system can warn the user of the impending risk of a data loss and advise the user of appropriate action.

Since S.M.A.R.T. utilizes the internal device microprocessor and other device resources, there may be some small overhead associated with its operation. However, special care has been taken in the design of the S.M.A.R.T. algorithms to minimize the impact to performance of the host system. Actual impact of S.M.A.R.T. overhead is dependent on the specific device design and the usage patterns of the host system.

For further information refer to the Travelstar 40GNX hard disk drive specifications for the enhanced availability model.

Load/Unload heads

The heads are unloaded by putting into operation one of the following commands:

- HARD RESET
- STANDBY
- STANDBY IMMEDIATE
- SLEEP

When the heads are unloaded, they rest in a small detent. To prevent the heads from being thrown off the ramp during angular acceleration, a bidirectional, normally open, mechanical latch engages with the actuator to keep it from turning in the

head loading direction. This action causes a “rattle” sound which can be mistaken for loose parts.

Drive usage condition

The expected product life is five years under typical mobile system conditions. The drive is designed to be used under the following conditions:

- 732 power on hours per month.
- Seeking, writing, and reading operation is less than 50% of power on hours.
- The drive is operated within specifications of shock, vibration, temperature, humidity, altitude, and magnetic field.
- The drive is protected from ESD.
- The breathing hole on top of the drive is not covered.
- Force is not applied to the cover of the drive.
- The specified power requirements of the drive are satisfied.
- The drive frame is grounded electrically to the system by four screws.
- The drive is mounted with the recommended screw depth and torque.
- The physical and electrical requirements of the interface satisfy ATA-5.
- The proper power-off sequence is used.

For further information refer to the Travelstar 40GNX hard disk drive specifications for the enhanced availability model.

Dimensions and weight

Dimensions	mm
Height	9.5±0.2
Width	69.85±0.25
Length	100.2±0.25

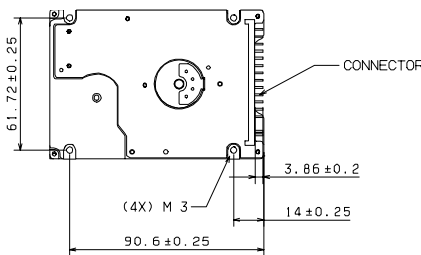
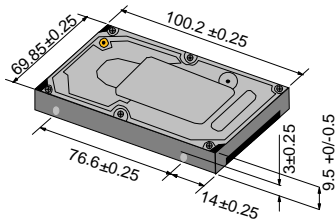
Weight (gm - max)	102
--------------------------	-----

Mounting orientation

The recommended mounting screw torque is 3.0 ± 0.5 kgf-cm.

The recommended mounting screw depth is 3.0 ± 0.3 mm for bottom mounting and 3.5 ± 0.5 mm for horizontal mounting.

The drive mounting hole locations and sizes are shown in the illustrations below.



© International Business Machines Corporation 2002

www.ibm.com/harddrive

IBM Technology Group Support Center
Telephone: 888.426.5214 or 507.286.5825
E-mail: drive@us.ibm.com

Singapore Technology Group Support Center
Telephone: (65)6418.9595 or 1800.418.9595
E-mail: drive@sg.ibm.com

UK Technology Group Support Center
Telephone: 44.1475.898.125
E-mail: drive@uk.ibm.com

Germany Technology Group Support Center
Telephone: 49.7032.153050
E-mail: drive@de.ibm.com

IBM Systems Storage Division
5600 Cottle Road
San Jose CA 95193
www.ibm.com/storage

Printed in the United States of America
05-2002
All Rights Reserved

IBM is the registered trademark and Travelstar is the trademark of International Business Machines Corporation.

Other company, product, and service names may be trademarks or service marks of others..

Produced by the IBM Technology Group Support Center.

Travelstar 40GNX Hard Disk Drive Specifications, enhanced availability models, version 1.0

This product summary is not a substitute for the full production specification, which should be used when detailed information is required.

Product Description data represents IBM's design objectives and is provided for comparative purposes; actual results may vary based on a variety of factors. This product data does not constitute a warranty.

Questions regarding IBM's warranty terms or methodology used to derive this data should be referred to the IBM Technology Group Support Center. Data subject to change without notice.

Date: 24 May 2002©